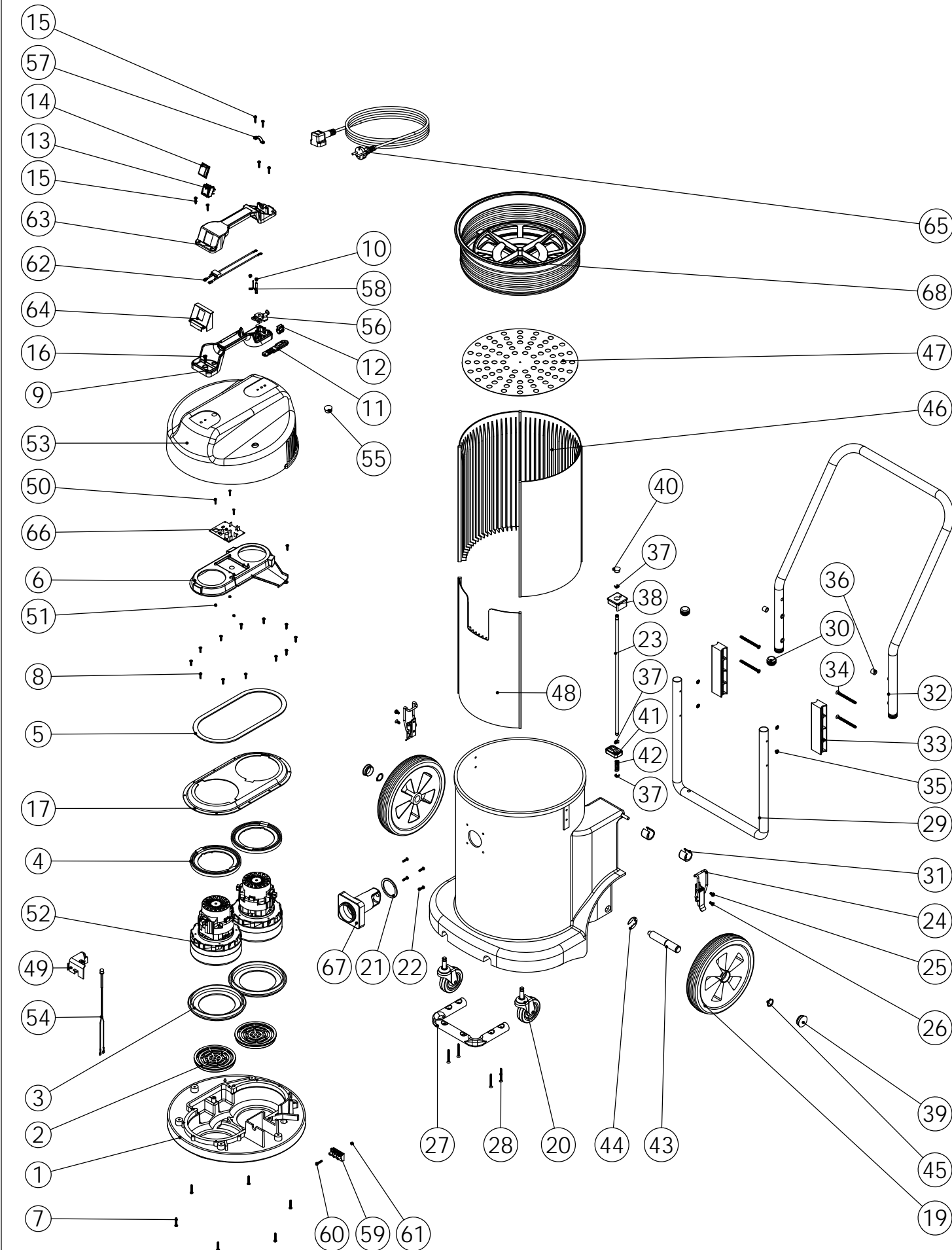


**Numatic International Spare Parts**

**Model No: NDD900 EXPLODED DRAWING**

234686  
DRAWING: DRW-4364 A01  
22/10/2009

NB: FOR WIRING SEE DRAWING: DRW-4345 (220/240V)



**Numatic International Spare Parts**

**Model No: NDD900 EXPLODED DRAWING**

POS	ITEM NO:	DESCRIPTION:	COMMENTS:
1	301048	PROCESSED BOTTOM MOTOR HOUSING	
2	206010	FAN GUARD	
3	202005	MOTOR BOTTOM GASKET	
4	227925	TOP MOTOR GASKET	
5	202012	GASKET	
6	237067	DUPLEX AIR SEPERATOR (FINE DUST SYSTEM)	
7	219369	No8 X 1 INCH LONG POZI PAN STAINLESS STEEL PLASTITE SCREW	
8	219370	No8 X 5/8 INCH LONG PLASTITE STAINLESS STEEL SCREW	
9	320686	HANDLE BASE MOULDING	
10	219090	M4 X 8MM LONG POZI PAN SEMS SCREW	
11	227636	STRAIN RELIEF	
12	227637	CABLE CLIP	
13	220552	RED ROCKER SWITCH	
14	206573	SWITCH COVER (PLUG HANDLE)	
15	219107	No6 X 5/8 INCH LONG POZI PAN PLASTITE SCREW	
16	219546	M5 X 20MM LONG POZI PAN SEMS SCREW	
17	225175	DUPLEX NDD TOP MOTOR HOUSING	
18	325131	NT 900 GREY DRUM PUNCH & INSERT	
19	204028	10 INCH WHEEL	
20	204060	3 INCH CASTOR	
21	202027	HOSE FLANGE GASKET	
22	219105	No8 X 5/8 INCH LONG POZI PAN PLASTITE SCREW	
23	206133	LOCKING BAR	
24	206135	TOGGLE FASTENER	
25	219047	M5 X 10MM LONG POZI PAN SEMS SCREW	
26	219330	M5 X 12MM LONG POZI PAN COUNTERSUNK SCREW	
27	418961	TOOL MOUNTING BAR (PAINT BLACK)	
28	219316	No10 X 43MM LONG POZI PAN COUNTER SUNK PLASTITE SCREW	
29	418960	LOWER HANDLE (PAINT BLACK)	
30	20637V	25.4MM TUBE END STOP	
31	206295	PLASTIC SADDLE FOOT	
32	329169	HANDLE ASSEMBLY	
33	206128	HANDLE BLOCK SPACER	
34	219422	M6 X 70MM LONG POZI PAN COUNTERSUNK SCREW	
35	219423	M6 COUNTERSUNK LOCK WASHER	
36	21985V	SPACER	
37	219307	E CLIP	
38	206126	LOCKING BAR KNOB	
39	206131	BLACK PLASTIC CAP	
40	206132	BLACK PLASTIC CAP	
41	206127	LOCKING BAR SUPPORT	
42	219312	COMPRESSION SPRING	
43	206137	STUB AXLE	
44	219306	E-CLIP	
45	219308	CIRCLIP	
46	229967	DRUM LINER (FOR ASSEMBLY VIEW	
47	401447	DRUM BASE (PAINTED GREY)	
48	308000	DRUM LINER (FOR ASSEMBLY VIEW ONLY)	
49	237069	LED HOLDER (DUSTCARE SYSTEM)	
50	219038	M3 X 16MM LONG SLOT SCREW	
51	219070	M3 NYLON INSERT NUT	
52	205442	220V 2 STAGE D.I BYPASS ACUSTEK MOTOR (BL21102T) (MARKED 230V) TCO	
	205443	240V 2 STAGE D.I BYPASS ACUSTEK MOTOR (BL21104T) (MARKED 230V) TCO	
53	323001	NDD COVER PROCESSED FOR LOW FLO LED	
54	230165	LOW FLOW LED LOOM	
55	220967	LENS COVER	
56	227631	TERMINAL COVER & CLAMP (3 PIN)	
57	216290	CABLE CLAMP	
58	206562	CONTACT PIN	
59	208263	TERMINAL BLOCK (3-pole 16A)	
60	21990V	M4 X 20MM LONG POZI PAN SCREW	
61	219083	M4 NYLON INSERT NUT	
62	230151	220V DUPLEX SUPPRESSOR ASSEMBLY	
63	229990	HANDLE COVER 16AMP 2PIN	
64	227635	SWITCH MOUNTING BRACKET (1 SWITCH)	
65	236144	10.0MT X 1.5MM X 2 CORE YELLOW CABLE (SOCKET + PLUG) EURO	
	236146	10.0MT X 1.5MM X 2 CORE YELLOW CABLE (SOCKET + PLUG) UK	
	236147	10.0MT X 1.5MM X 2 CORE YELLOW CABLE (SOCKET + PLUG) SWISS	
66	230188	DUPLEX CONTROL BOARD PCB 100-240 V AC .50/60HZ	
67	208220	BAG CONNECTOR - (FINE DUST 14" DRUM)	
68	502014	14 INCH COMBINATION MICROTEx FILTER ASSEMBLY	