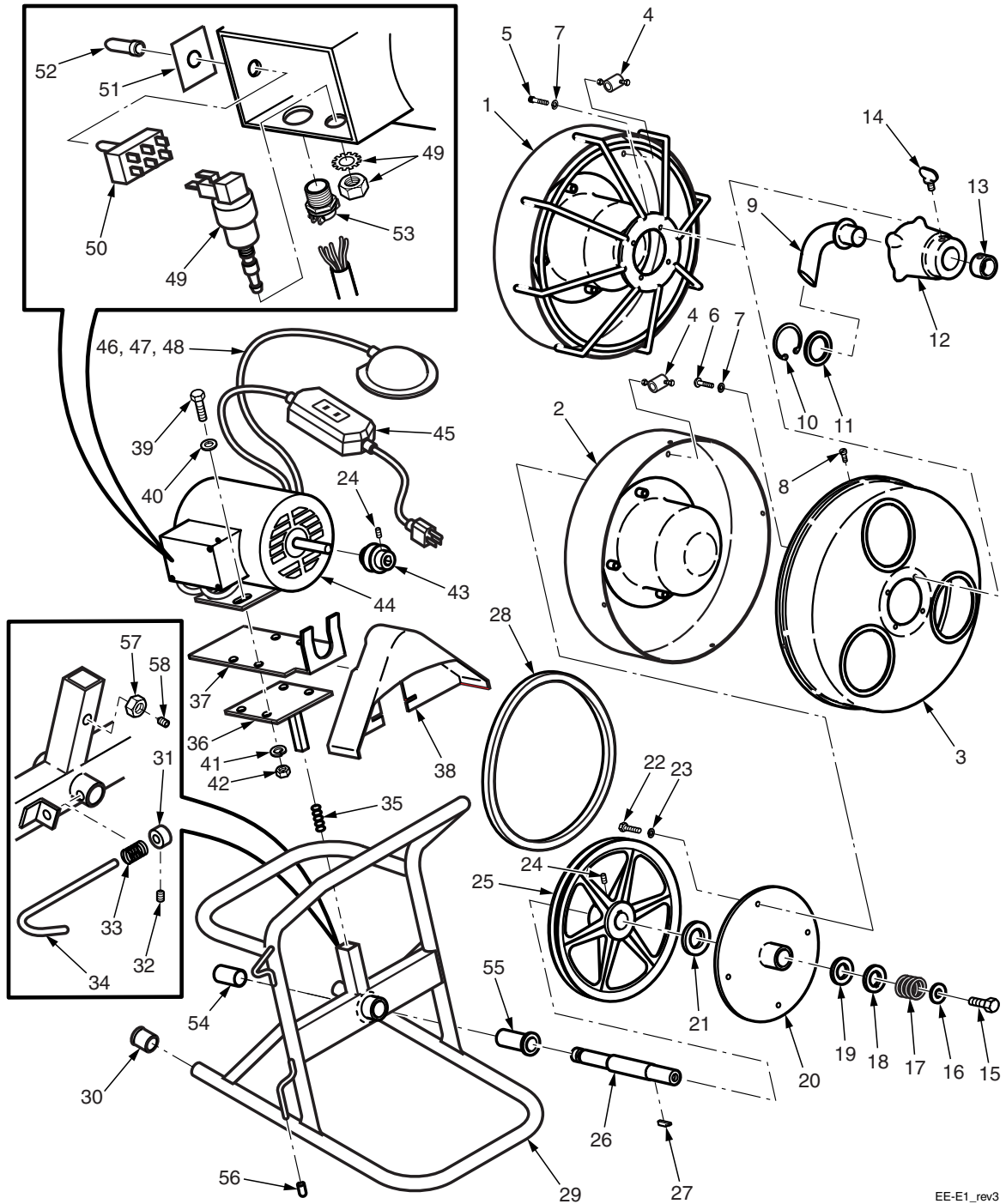


# MODEL E DRAIN CLEANING MACHINE



EE-E1\_rev3

## MODEL E DRAIN CLEANING MACHINE

ITEM NUMBER	PART NUMBER	DESCRIPTION	AMT
1	ED-3*	Welded Drum/Cage Assembly . . . . .	1
2	ED-1*	Rear Cable Drum w/Inner Drum . . . . .	1
3	ED-2	Front Cable Drum . . . . .	1
4	DN-6	Cable Anchor (used with ED-1 only) . . . . .	1
5	MS102412HH	10-24 x 1/2 Hex Head Machine Screw . . . . .	4
6	MS102438RH	10-24 x 3/8 Round Head Machine Screw . . . . .	4
7	LW10	Lockwasher . . . . .	4
8	MS83214SS	Stainless Steel Metal Screw . . . . .	4
	ED-4A**	Guide Tube and Bracket Assembly . . . . .	1
9	ED-4	Guide Tube . . . . .	1
10	RR175	Retaining Ring . . . . .	1
11	N-5-4	Retaining Washer . . . . .	1
12	ED-5	Bracket . . . . .	1
13	ED-6	Collar . . . . .	1
14	WS516	5/16-18 Wing Screw . . . . .	1
	EE-1A***	Drive Assembly w/Clutch . . . . .	1
15	CSHH12201	1/2-20 x 1 Hex Head Capscrew . . . . .	1
16	WA716P	Flatwasher . . . . .	1
17	N-14	Spring . . . . .	1
18	EE-3	Drive Disc . . . . .	1
19	EE-4	Front Friction Disc . . . . .	1
20	EE-2	Drum Mounting Plate . . . . .	1
21	EE-5	Rear Friction Disc . . . . .	1
22	CSHH142034	1/4-20 x 3/4 Hex Head Capscrew . . . . .	4
23	LW14	Lockwasher . . . . .	4
24	SS51618516	5/16-18 x 5/16 Set Screw . . . . .	2
25	EE-6	10" Pulley . . . . .	1
26	EE-1	Drive Shaft . . . . .	1
27	N-15	Clutch Key . . . . .	1
28	4L390	V-Belt . . . . .	1
	EF-1A****	Frame Assembly . . . . .	1
29	EF-1	Welded Frame . . . . .	1
30	EE-14	Rubber Tips . . . . .	2
31	EE-8	Retainer Pin Collar . . . . .	1
32	SS103218	10-32 x 1/8 Set Screw . . . . .	1
33	EE-15	Retainer Pin Spring . . . . .	1
34	EE-7	Retainer Pin . . . . .	1
35	EE-9	Motor Tension Spring . . . . .	1
36	R23*****	Motor Mount . . . . .	1
37	R22*****	Adapter Plate . . . . .	1
38	EE-12	Belt Guard . . . . .	1
39	CSHH516181	Motor Mount Capscrews . . . . .	4
40	WA516S	Motor Mount Flatwashers . . . . .	4

## MODEL E DRAIN CLEANING MACHINE

ITEM NUMBER	PART NUMBER	DESCRIPTION	AMT
41	LW516	Motor Mount Lockwashers . . . . .	4
42	NU51618FHP	Motor Mount Nuts. . . . .	4
43	N-8	Motor Pulley . . . . .	1
44	EM-1/3	1/3 H.P. Motor w/Fwd-Rev Switch . . . . .	1
45	GFCI	Ground Fault Circuit Interrupter w/Cord . . .	1
46	FP-1A*****	Air Foot Pedal Transmitter w/Air Hose . . . .	1
47	FP-1	Foot Pedal Only. . . . .	1
48	FP-2	Air Hose Only . . . . .	1
49	TBS3218	Air Activated On/Off Switch. . . . .	1
50	SW-FR	Forward/Reverse Switch . . . . .	1
51	SW-FRP	Forward/Reverse Switch Plate . . . . .	1
52	SW-BOOT	Toggle Switch Boot. . . . .	1
53	TSC12	Two-Screw Connector. . . . .	1
54	OBSS243220	Rear Bronze Bushing . . . . .	1
55	OBSF243216	Front Bronze Bushing . . . . .	1
56	DL6CAP	Cord Hook Cap . . . . .	2
57	SS5162458DP*****	5/16-24 Set Screw Dog Point . . . . .	1
58	NU51624FHP*****	5/16-24 Hex Nut . . . . .	1

\* Includes Item 4

\*\* Includes Items 9-14

\*\*\* Includes Items 15-27

\*\*\*\* Includes Items 29-37 and 54-58

\*\*\*\*\* Includes Items 47 and 48

\*\*\*\*\* Prior to Serial No. 6629, Item 36 part no. is EE-10 and Item 37 part no. is EE-11.

\*\*\*\*\* Added to assembly, beginning with Serial No. 8141.